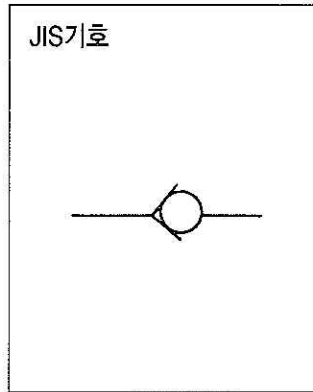
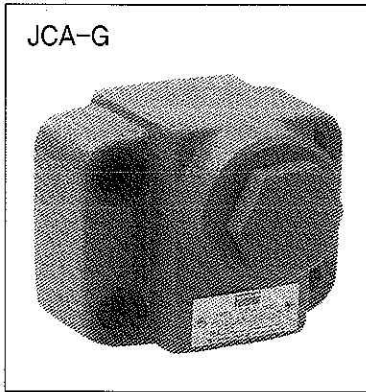


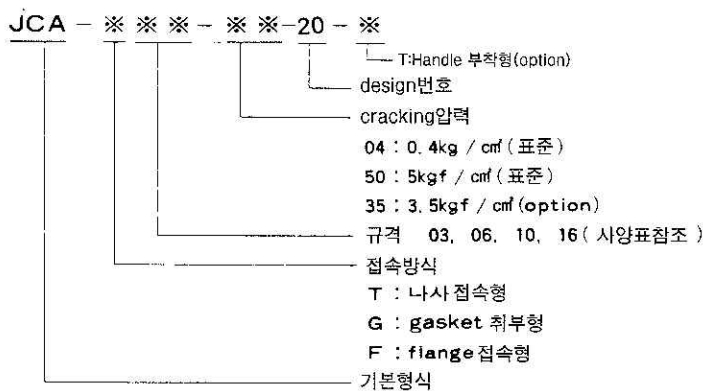
## ANGLE CHECK VALVE

JCA-\*\*\*



● 이 밸브는 line에 직각방향으로 조립되어 cracking 압력에 달하면 check valve를 눌러 열고 한쪽방향으로 작동유를 흐르게 하여 역방향의 흐름을 저지하는 경우에 사용한다.

### 형식기호설명



● 인산에스테르계 작동유를 사용하는 경우는 형식기호의 앞에 "F -"를 기입해서 지정해 주십시오. (option)

형 식 기 호	규 격	최고사용 압력 (kgf/cm <sup>2</sup> )	최대유량 (ℓ/min)	CRACKING 압 력 (kgf / cm <sup>2</sup> )	중량 (kg)
JCA - T03 - 04 - 20	3/8	250	60	0.4	0.9
JCA - T03 - 50 - 20				5	
JCA - T06 - 04 - 20	3/4		200	0.4	1.7
JCA - T06 - 50 - 20				5	
JCA - T10 - 04 - 20	1¼		400	0.4	5.6
JCA - T10 - 50 - 20				5	
JCA - G03 - 04 - 20	3/8		60	0.4	1.7
JCA - G03 - 50 - 20				5	
JCA - G06 - 04 - 20	3/4		200	0.4	2.9
JCA - G06 - 50 - 20				5	
JCA - G10 - 04 - 20	1¼		400	0.4	5.5
JCA - G10 - 50 - 20				5	
JCA - F06 - 04 - 20	3/4		200	0.4	3.7
JCA - F06 - 50 - 20				5	
JCA - F10 - 04 - 20	1¼		500	0.4	7.6
JCA - F10 - 50 - 20				5	
JCA - F16 - 04 - 20	2		800	0.4	20
JCA - F16 - 50 - 20				5	
JCA - F24 - 04 - 20	3		1600	0.4	62.5
JCA - F24 - 50 - 20				5	

### 취급방법

- cracking압력  
0.5kgf/cm<sup>2</sup> 역류방지용 밸브로, 5kgf/cm<sup>2</sup>는 저항밸브로 사용됩니다.  
2kgf/cm<sup>2</sup>, 3.5kgf/cm<sup>2</sup>의 것도 option으로 준비돼 있습니다.
- 사용유의 청정도관리, 점도와 유온, 설치·보수에 관해서는 E-1page를 참조해 주십시오.

호칭	형식기호	접속구경	중량(kg)
중 (03)	JCP-03M	PT 중	1.6
	JCP-03M04	PT 1/2	
중 (06)	JCP-06M	PT 중	2.4
	JCP-06M08	PT 1	3
1 1/2 (10)	JCP-10M	PT 1 1/2	4.8
	JCP-10M12	PT 1 1/2	5.7

### 부속품

#### gasket부착형

- G03 취부 bolt Socket Head bolt M10×45 4개
- G06 취부 bolt Socket Head bolt M10×50 4개
- G10 취부 bolt Socket Head bolt M10×55 6개

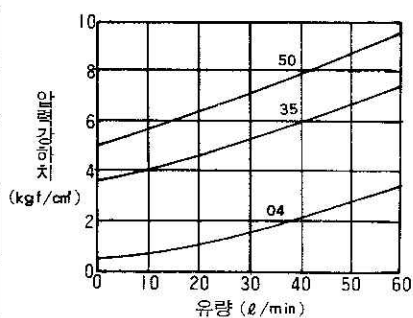
#### flange접속형

- 사각 flange취부 bolt, O-ring식
- 상기 flange는 JIS B2291SSA210kgf/cm<sup>2</sup>용입니다.

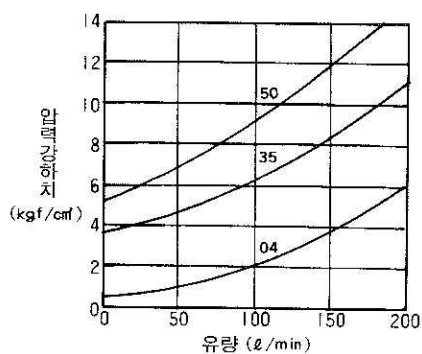
## □ 성능곡선

압력강하특성 유점도 : 32 cst에 있어서의 개략치입니다.

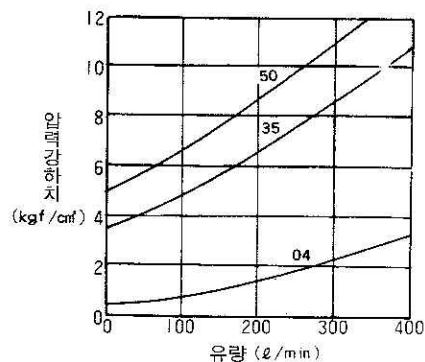
### JCA-T03 압력강하특성



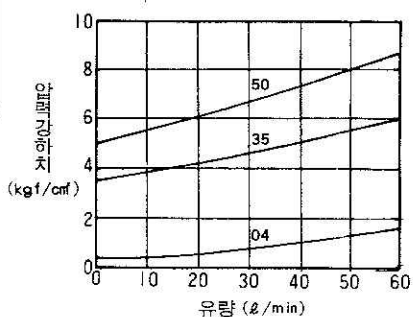
JCA-T06 압력강하특성



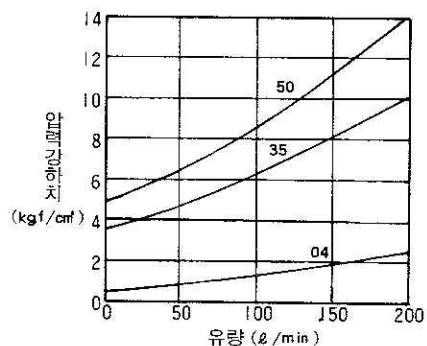
JCA-T10 압력강하특성



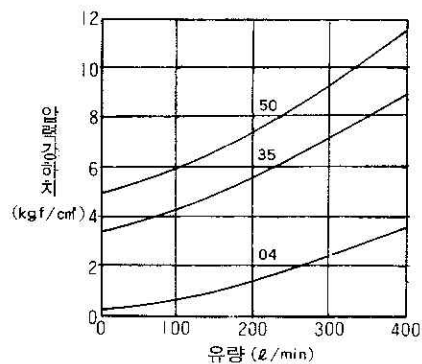
### JCA - G03 압력강하특성



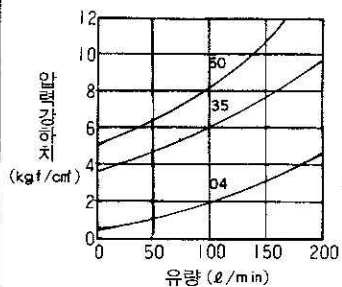
JCA - G06 압력강하특성



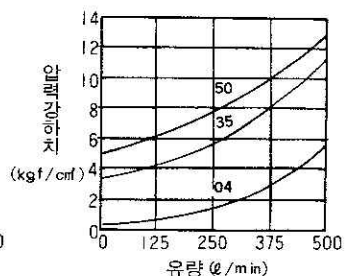
### JCA-G10 압력강하특성



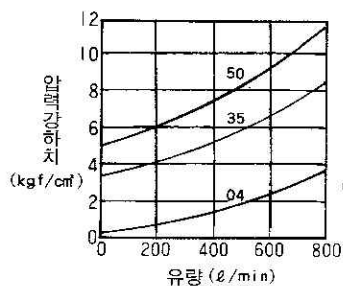
JCA - F06 압력강하특성



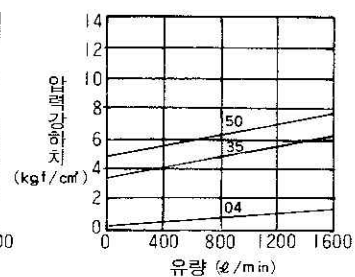
### JCA-F10 압력강하특성



### JCA-F16 압력강하특성

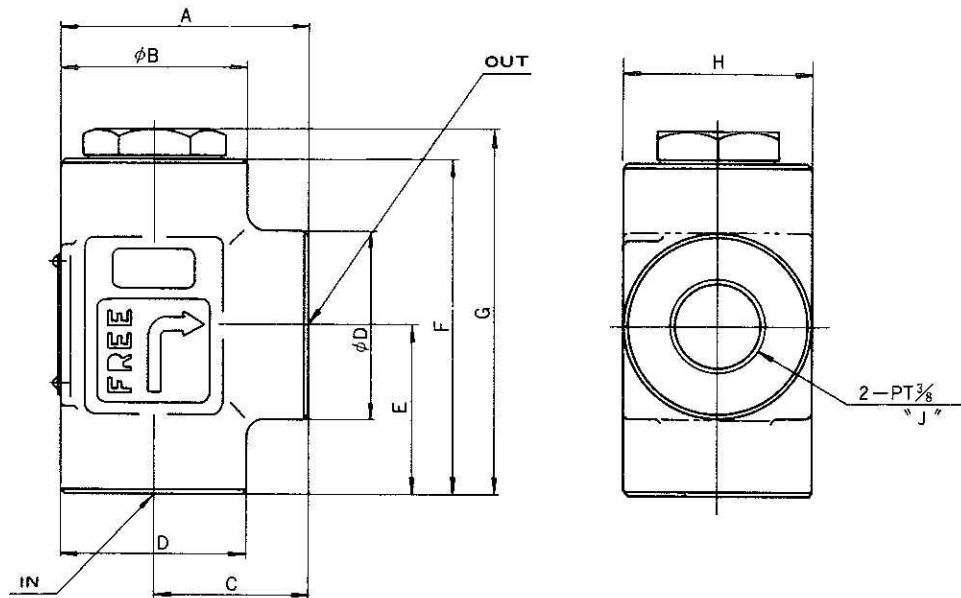


JCA-F24 압력강하특성



## 외형치수도

JCA-T※※

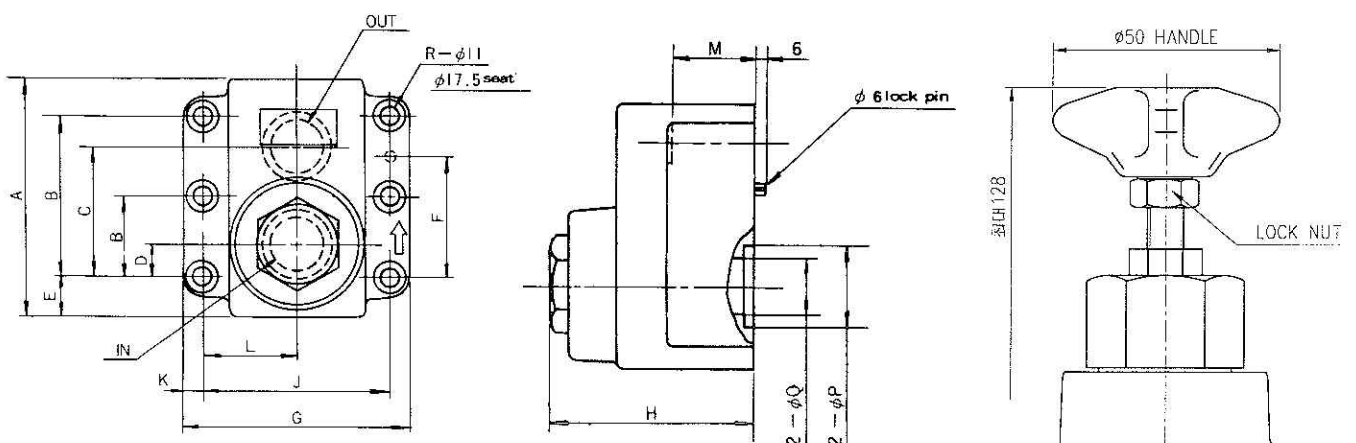


● 치수표

형 식	치 수 (mm)								
	A	B	C	D	E	F	G	H	J
JCA - T03	60	44	36	38	33	72	80.5	44	3/8
JCA - T06	72	54	45	54	49	96	104.5	54	3/4
JCA - T10	105	70	65	80	65	121.5	130	80	1 1/4

JCA-G※※

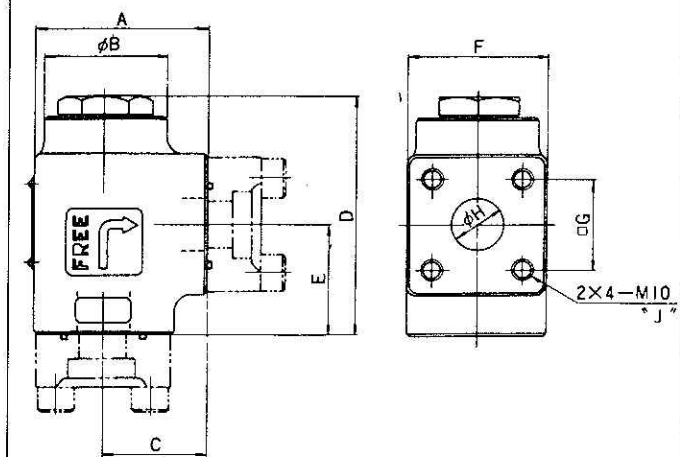
JCA-G03 CHECK 변위 조정기능부착



● 치수표

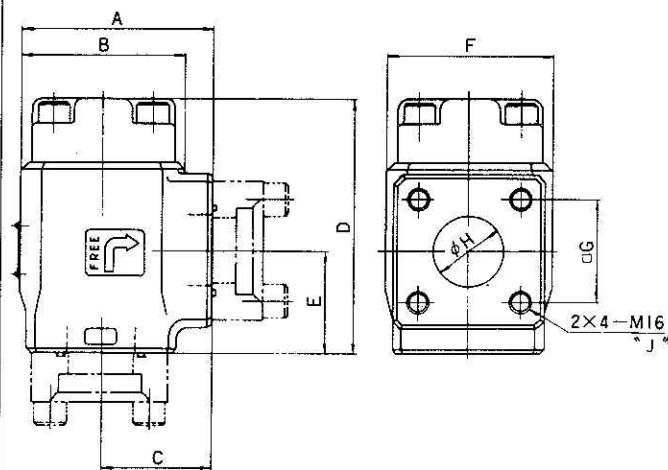
형 식	치 수 (mm)																
	A	B	B	C	D	E	F	G	H	J	K	L	M	N	φ P	φ Q	R
JCA - G03	72	42.8	-	35.7	7.1	17.45	31.8	90	72.5	66.7	11.6	33.6	30	15	22	14	4
JCA - G06	93	60.3	-	49.2	11.1	20.3	44.5	102	84.5	79.4	11.3	39.7	35	15	34	22	4
JCA - G10	123	84.1	42.1	67.5	16.7	20.3	62.7	120	97	96.8	11.6	48.4	40	15	38	26	6

JCA-F06, 10



형식	치수 (mm)								
	A	φB	C	D	E	F	G	H	J
JCA-F06	76	54	45	104.5	49	62	40	23	10
JCA-F10	105	70	65	130	65	80	56	34	12

JCA-F16, 24

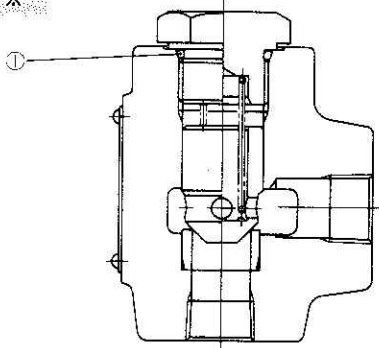


주) J치수는 eye bolt를 포함하는 최대치(F24)

형식	치수 (mm)								
	A	B	C	D	E	F	G	H	J
JCA-F16	140	120	80	181	73	120	73	50	
JCA-F24	195	190	100	280	103	190	103	74	312.3

## 단면구조도

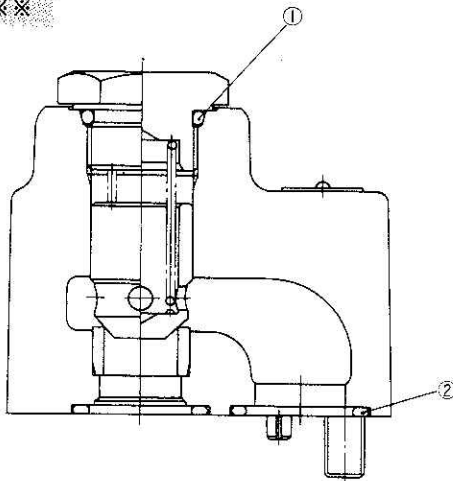
JCA-T※※



SEAL 부품일람표 (O-RING)

형식	사양·수량
JCA-T03	JIS B2401 1B P21×1개
JCA-T06	JIS B2401 1B P24×1개
JCA-T10	JIS B2401 1B P32×1개

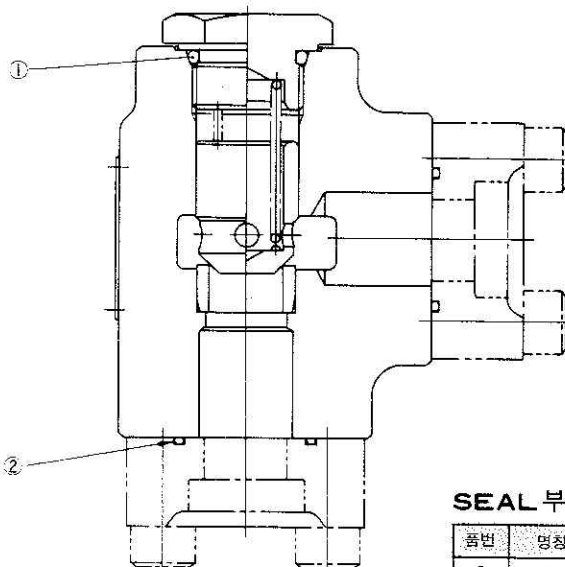
JCA-G※※



SEAL 부품일람표

품번	명칭	수량	규격	G 03	G 06	G 10
①	O-RING	1	JIS B2401	1B P22	AS568-119	1B P32
②	O-RING	2	JIS B2401	1B P18	1B P29	1B P32

JCA-F※※



SEAL 부품일람표

품번	명칭	수량	규격	F 06	F 10	F 16	F 24
①	O-RING	1	JIS B2401	1B P24	1B P32	1B G60	1B G90
②	O-RING	2	JIS B2401	1B G30	1B G40	1B G60	1B G85